

**ELECTRONIC WORK STATION**

For modern panel production for the furniture industry, adequate quality control is indispensable. During the production, to set up the manufacturing machines, at the end of the work shift for quality control, on acceptance of semi-finished products from third parties and for product certification, the electronic work station ensures the quality of your products and cuts machine stops and the time taken for assembly, there by increasing productivity.



Item	Description
BCE 22 Y07-R	dimension 2.200 mm x 700 mm - panels/BCE 40 mm - thickness 0,1 mm with 6-position revolver
BCE 25 Y10-R	dimension 2.500 mm x 1.000 mm - panels/BCE 40 mm - thickness 0,1 mm with 6-position revolver
BCE 31 Y10-R	dimension 3.100 mm x 1.000 mm - panels/BCE 40 mm - thickness 0,1 mm with 6-position revolver



Execution with 6-position revolver to speed up feeler pin change

**THANKS TO THIS WORK STATION YOU CAN CHECK**

- Panel dimensions
- Out of square angles
- Distances between hole centres
- Parallelism and orthogonality between holes
- Depth of vertical and horizontal holes
- Dimension of grooves on panels
- Profiles on shaped panels
- Possibility of zero-setting to left and right



Blocking system by means of 2 vacuum units  
Useful when small panels are measured (optional)

The electronic workstation is a real "quality control station" able to check almost all dimensions on the length, width and thickness of the panel

**The tolerance of max. 0,1mm mistake on the whole device surface is guaranteed**

**First quality components** as well as highly automated processing cycle ensure the extreme precision of the workstation

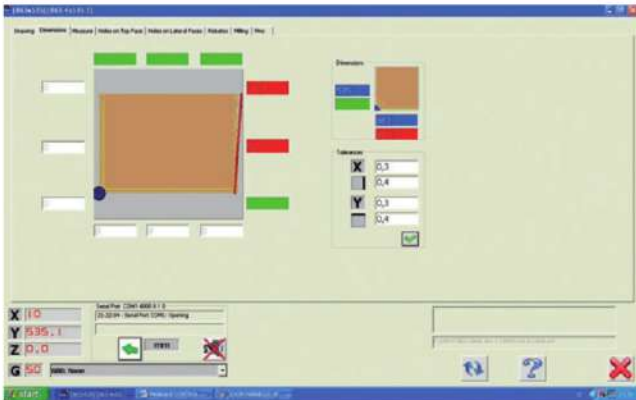
Last production step consists in the complete and **scrupulous inspection effected** also using certified block gauges.

The electronic workstation can also operate in dusty environment

**SOFTWARE (optional)**

For a rational use of the electronic workstation , a special software program has been developed to suit the requirements of modern furniture production and semi-finished products.

Completely worked out at **M.Conti** in collaboration with expert computer engineers and advise from important manufacturing companies, the software has been developed considering and trying to solve all producers' requirements.



**SOFTWARE SPECIFICATION**

1) To **check and compare** a finished piece, or a CAD execution of the piece.

The elements which can be measured are:

1. Panel squaring
2. Vertical holes
3. Horizontal holes
4. Cuts
5. Relative distances

Using the software program we can visualize the measuring taken on the display and compare them with those requested thus detecting any mistake in production or out of tolerance dimension

A final report showing the measures taken can be printed, stored or attached to the production batch.



**2) Graphic mode:**

To **digitise a sample piece** and create a DXF file.

The elements which can be digitised are:

1. Curves



Side stop,  
longer execution  
(optional)



**OPTIONAL FEATURES**

Item	Description
AS1500201	software program
SPP040077	Z-axis
SPP040079	panel hold down system
SPP040107	additional vacuum unit
SPP040080	6 adapters revolver
AS1500224	higher side stop